



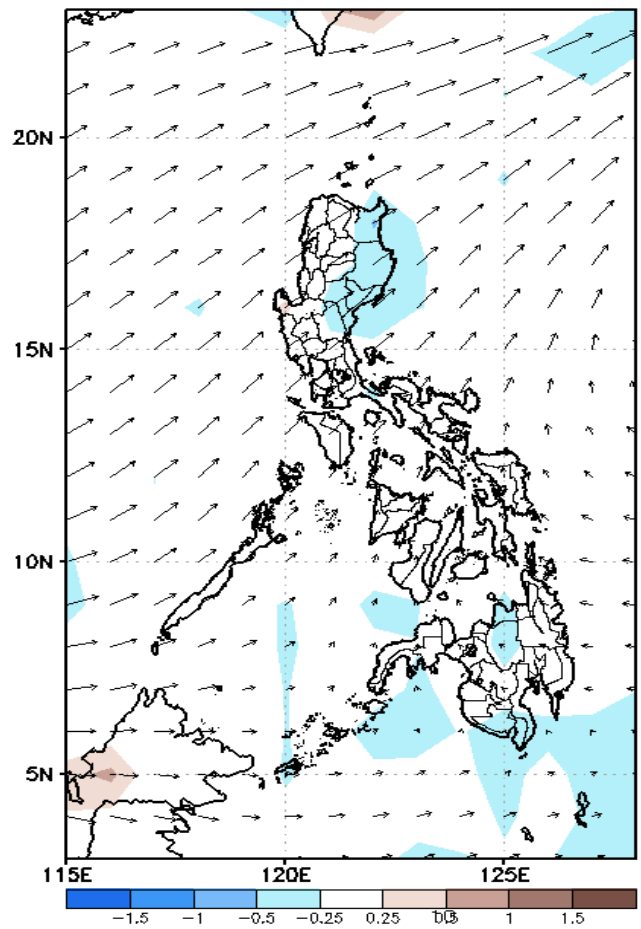
Week 1 & Week 2 Forecast for the Philippines using GEFS Model



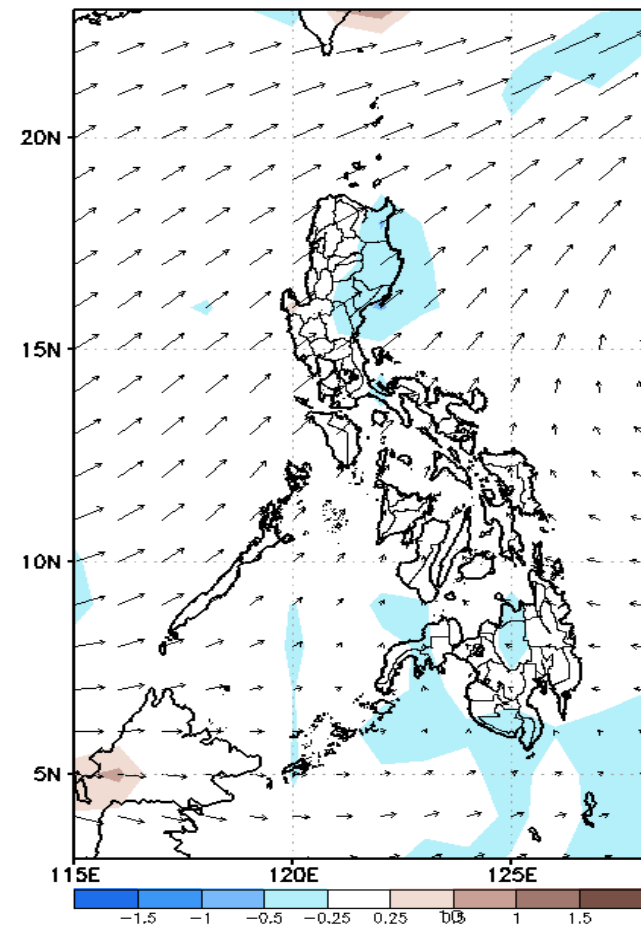
GEFS Week-1 Forecasts: Wind Anomaly Forecast

Week 1: May 20-26, 2022

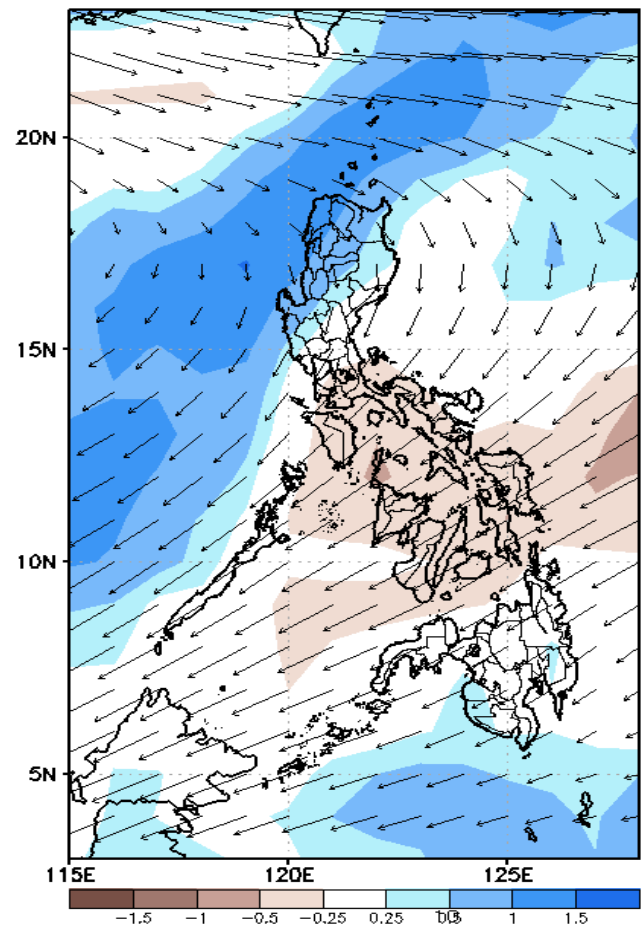
GEFS Week-1 850-hPa Divergence and Wind Anom
Valid: 20220520 - 20220526



GEFS Week-1 700-hPa Divergence and Wind Anom
Valid: 20220520 - 20220526



GEFS Week-1 200-hPa Divergence and Wind Anom
Valid: 20220520 - 20220526

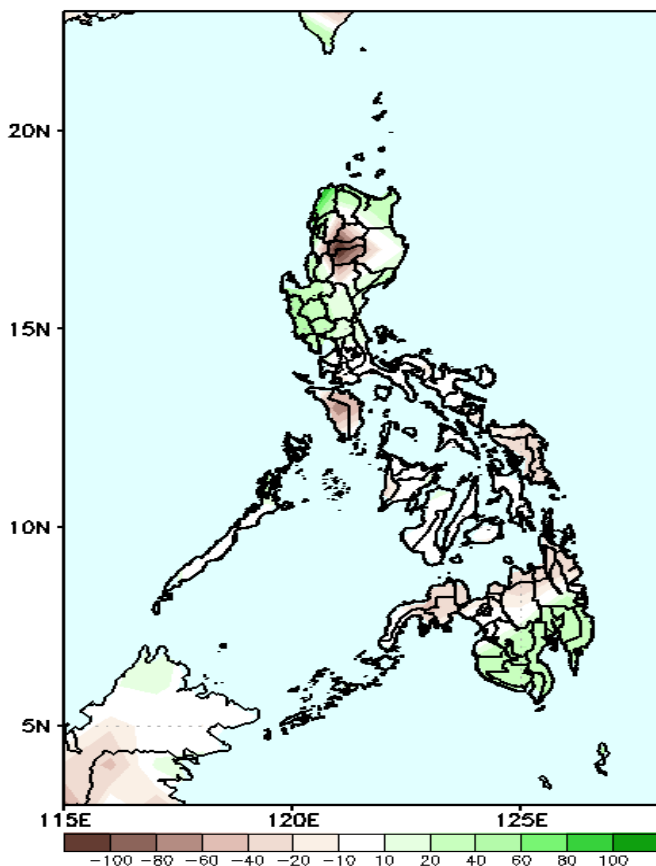


Southwesterly windflow is forecasted to affect most parts of Luzon and Western Visayas while Easterlies affecting the rest of Visayas and most parts of Mindanao during the forecast period

Precipitation Anomaly and Exceedance Probability > 25/50 mm

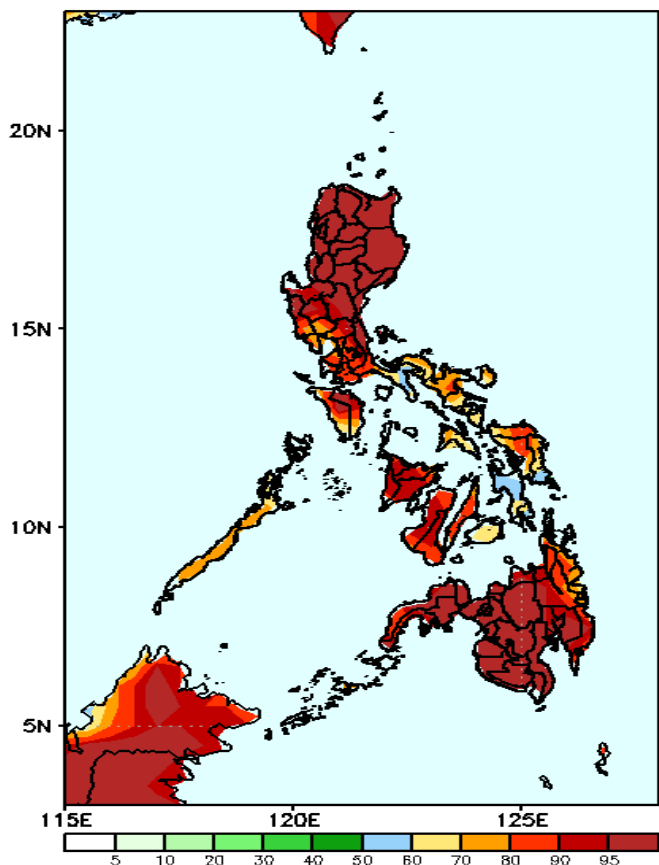
Week 1: May 20-26, 2022

GEFS Week-1 Precip Anomaly
Valid: 20220520 - 20220526



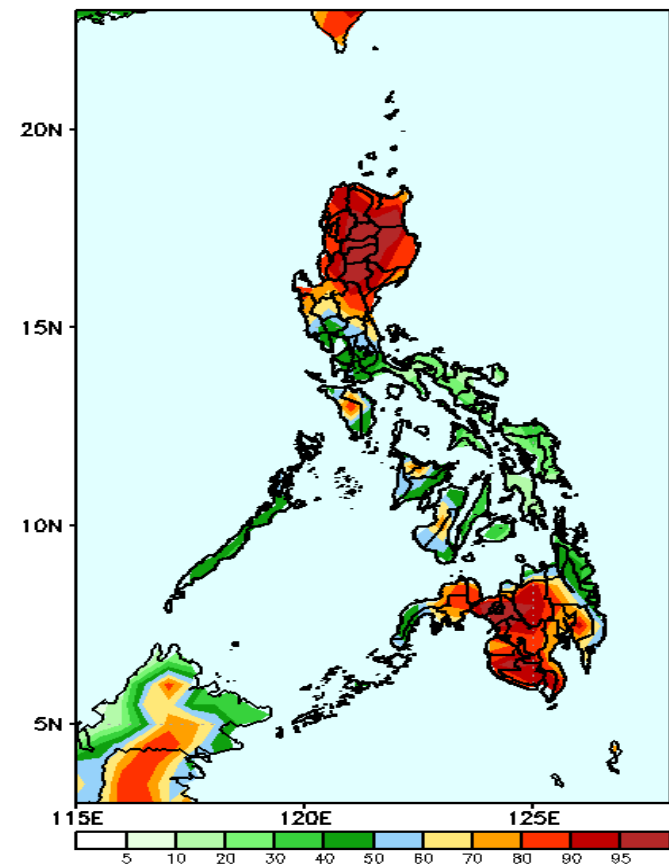
Increase of rainfall of 40-80mm in Ilocos Norte, Cagayan, La Union, Pangasinan and most parts of Central Luzon and southern Mindanao while rainfall deficit of more than 100mm in CAR and 20-80mm for the rest of the country during the forecast period.

GEFS Week-1 Exceedance Prob. > 25mm
Valid: 20220520 - 20220526



High probability of rainfall to exceed 25mm in most parts of the country during the forecast period.

GEFS Week-1 Exceedance Prob. > 50mm
Valid: 20220520 - 20220526

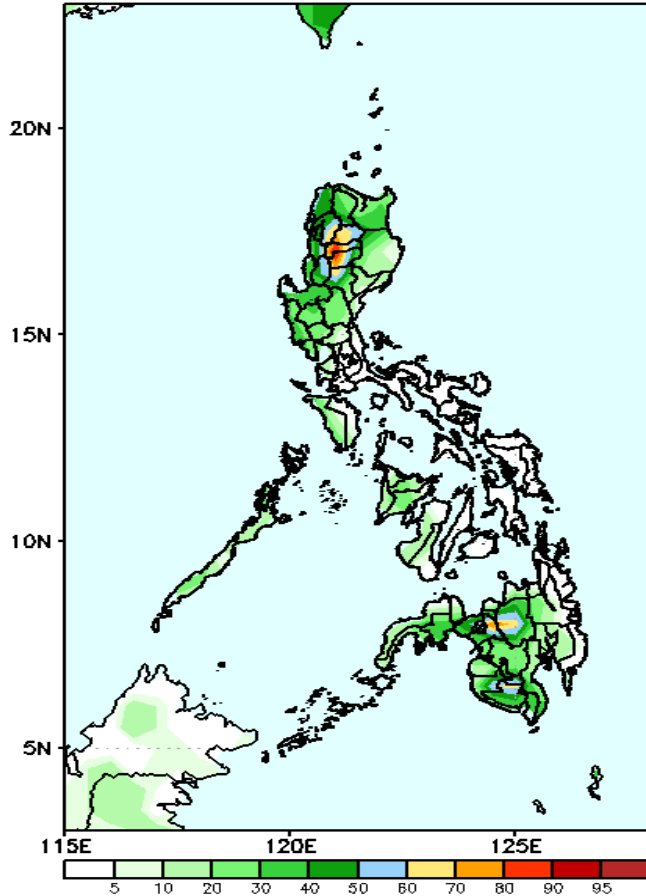


High probability of rainfall to exceed 50mm in most parts of Northern & Central Luzon, Mindoro, western Visayas and Mindanao(except CARAGA) while less likely for the rest of the country during the forecast period.

Exceedance Probability > 100/150/200 mm

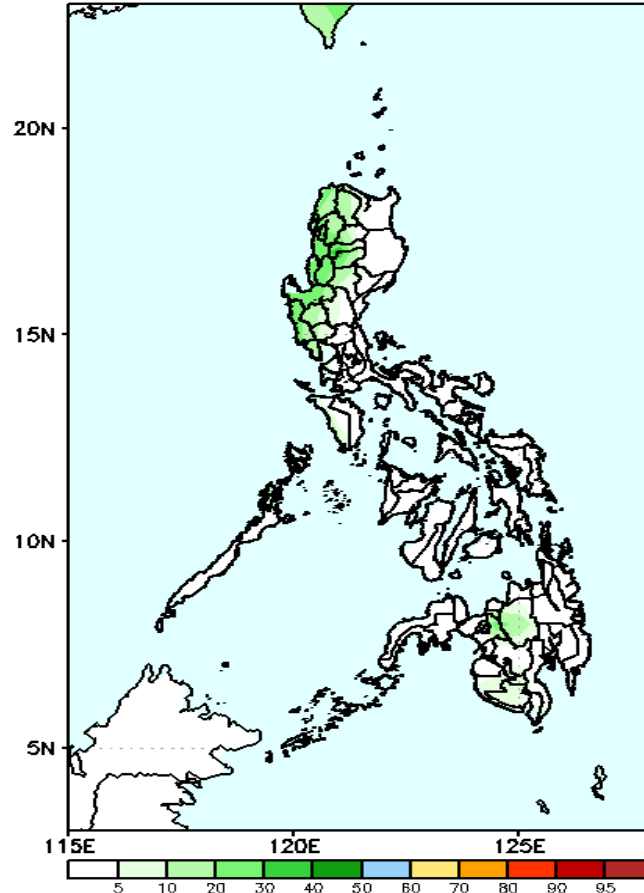
Week 1: May 20-26, 2022

GEFS Week-1 Exceedance Prob. > 100mm
Valid: 20220520 - 20220526



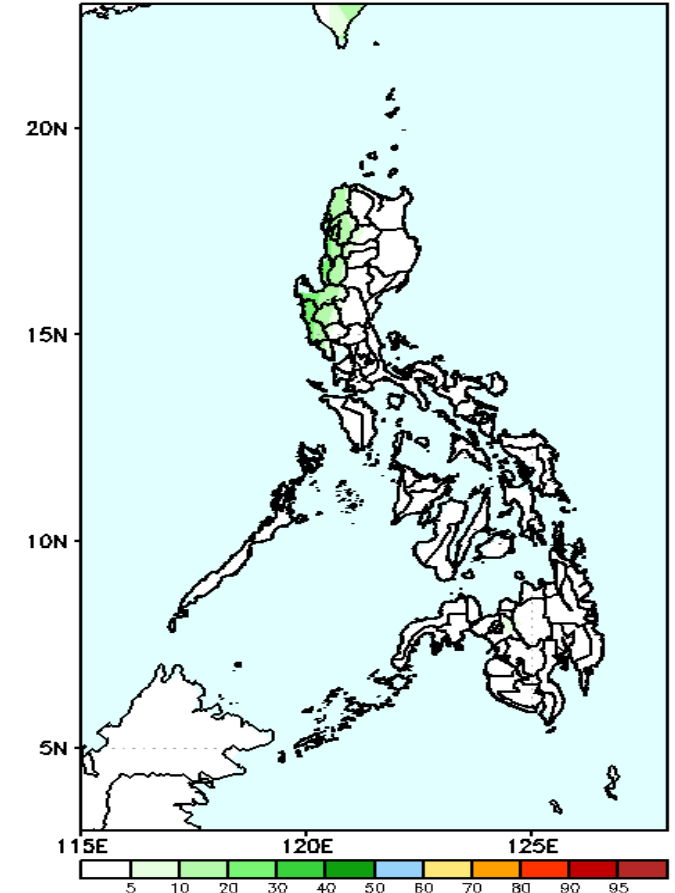
Low probability of rainfall to exceed 100mm in most parts of the country except in Cordillera Region where there is 60-90% chance during the forecast period.

GEFS Week-1 Exceedance Prob. > 150mm
Valid: 20220520 - 20220526



Low probability of rainfall to exceed 150mm in most parts of the country during the forecast period.

GEFS Week-1 Exceedance Prob. > 200mm
Valid: 20220520 - 20220526



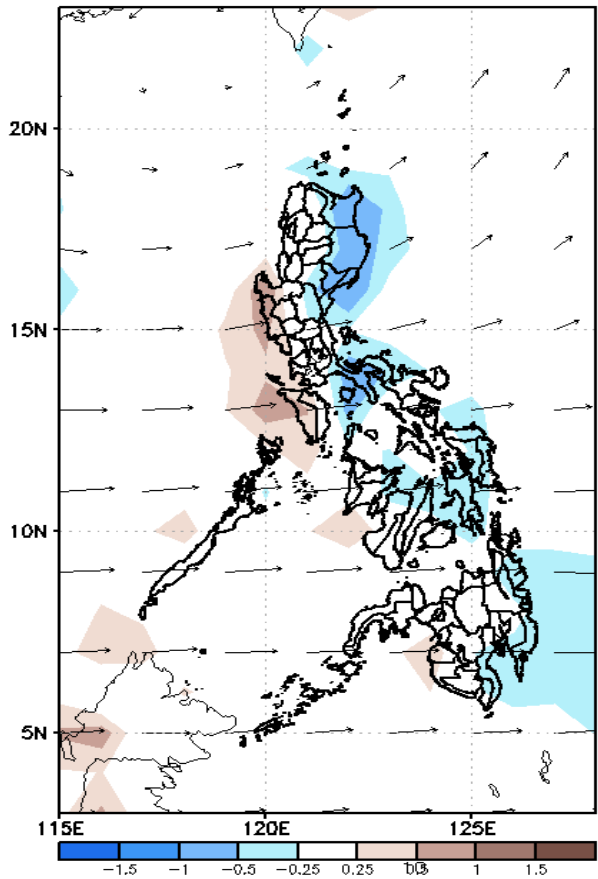
Low probability of rainfall to exceed 200mm in most parts of the country during the forecast period.



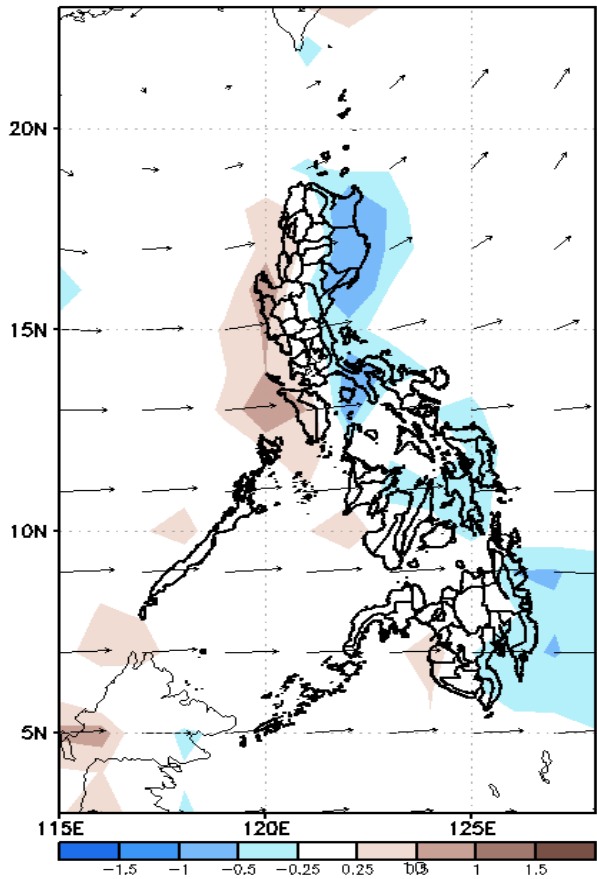
GEFS Week-2 Forecasts: Wind Anomaly Forecast

Week 2: May 27- Jun 02, 2022

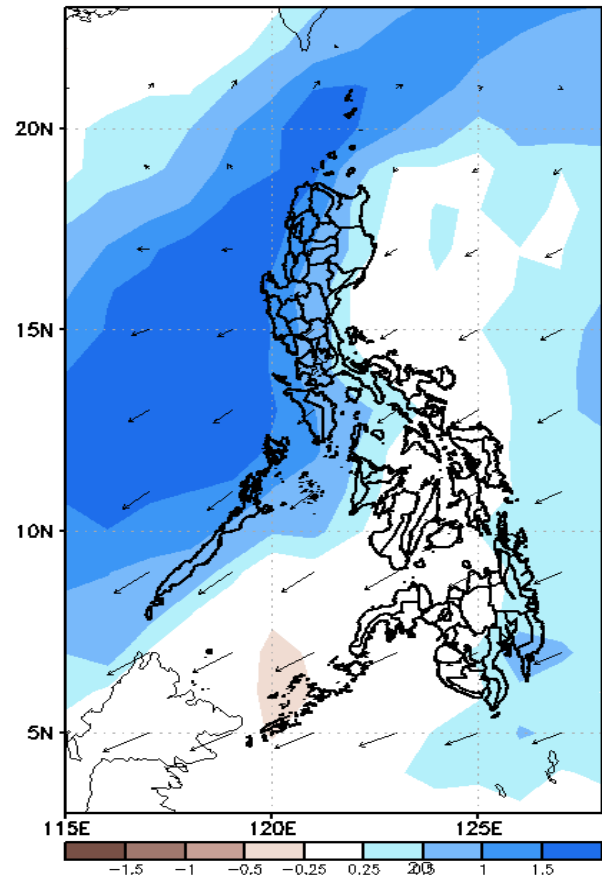
GEFS Week-2 850-hPa Divergence and Wind Anom
Valid: 20220527 - 20220602



GEFS Week-2 700-hPa Divergence and Wind Anom
Valid: 20220527 - 20220602



GEFS week-2 200-hPa Divergence and Wind Anom
Valid: 20220527 - 20220602

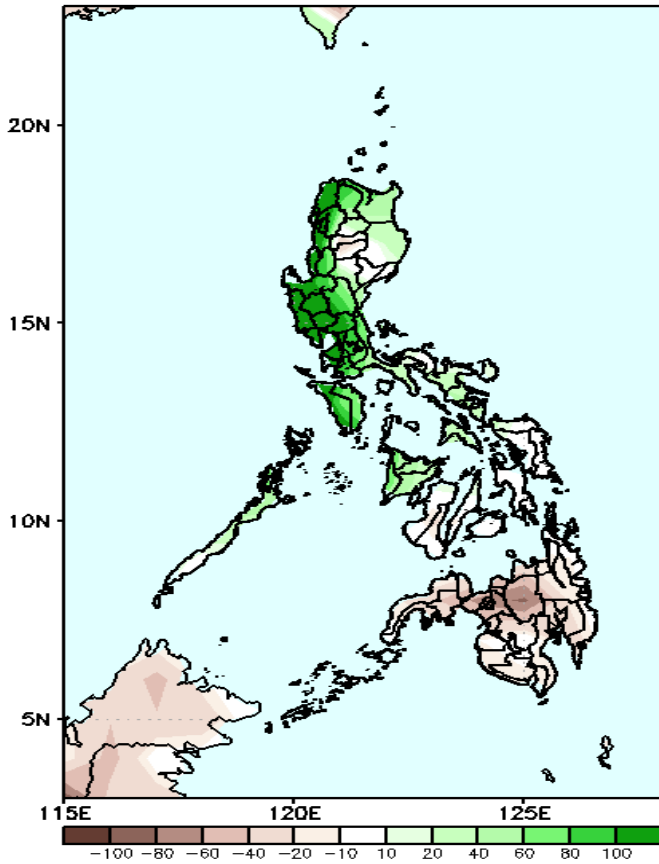


Westerly to Southwesterly windflow is forecasted to affect most parts of the during the forecast period

Precipitation Anomaly and Exceedance Probability > 25/50 mm

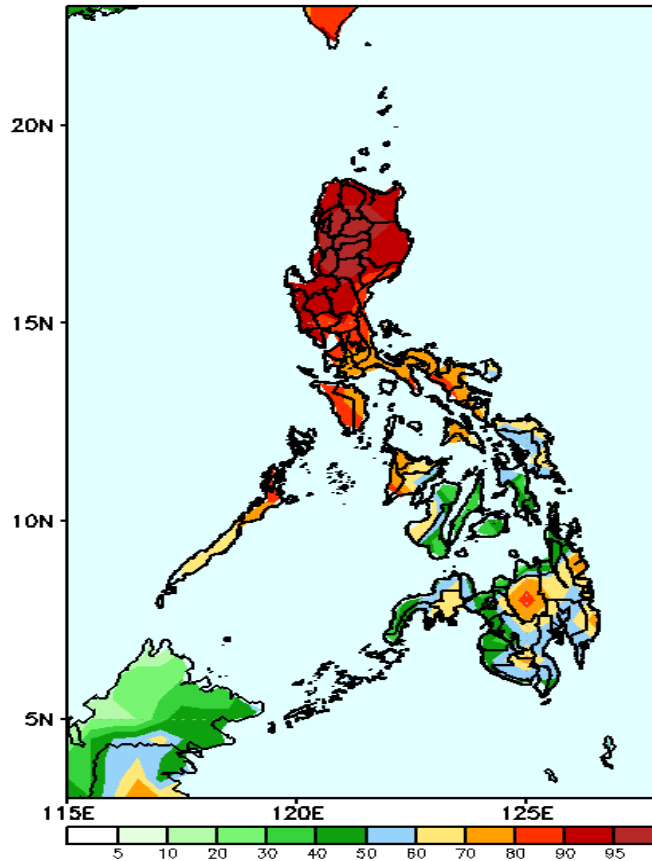
Week 2: May 27- Jun 02, 2022

GEFS Week-2 Precip Anomaly
Valid: 20220527 - 20220602



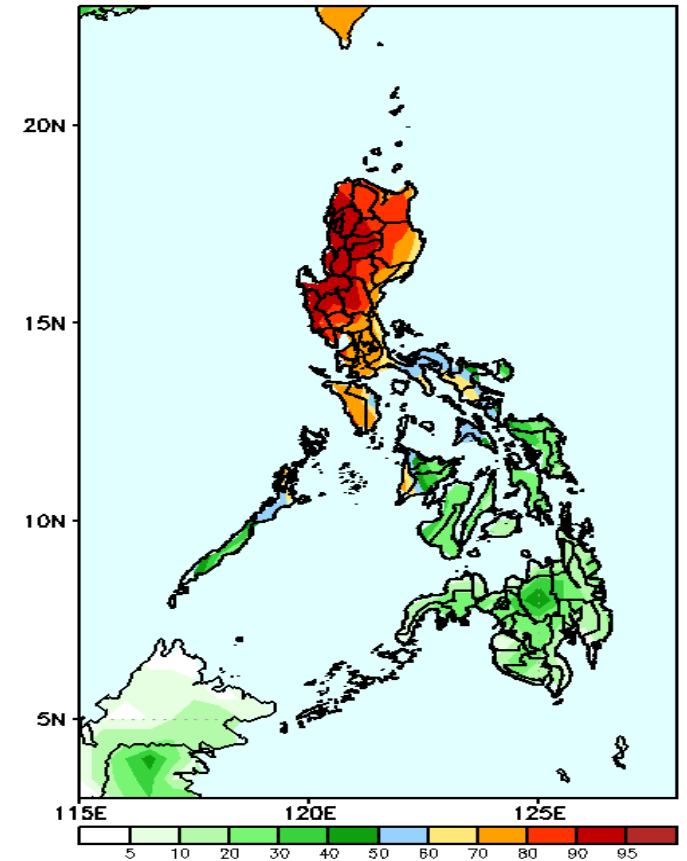
Increase of rainfall of more than 100mm in Western & Central Luzon, 40-80mm for the rest of Luzon and Panay Island while rainfall deficit of 40-80mm in Mindanao during the forecast period.

GEFS Week-2 Exceedance Prob. > 25mm
Valid: 20220527 - 20220602



High probability of rainfall to exceed 25mm in most parts of Luzon, Panay Island and Bukidnon while 50-80% for the rest of the country during the forecast period.

GEFS Week-2 Exceedance Prob. > 50mm
Valid: 20220527 - 20220602



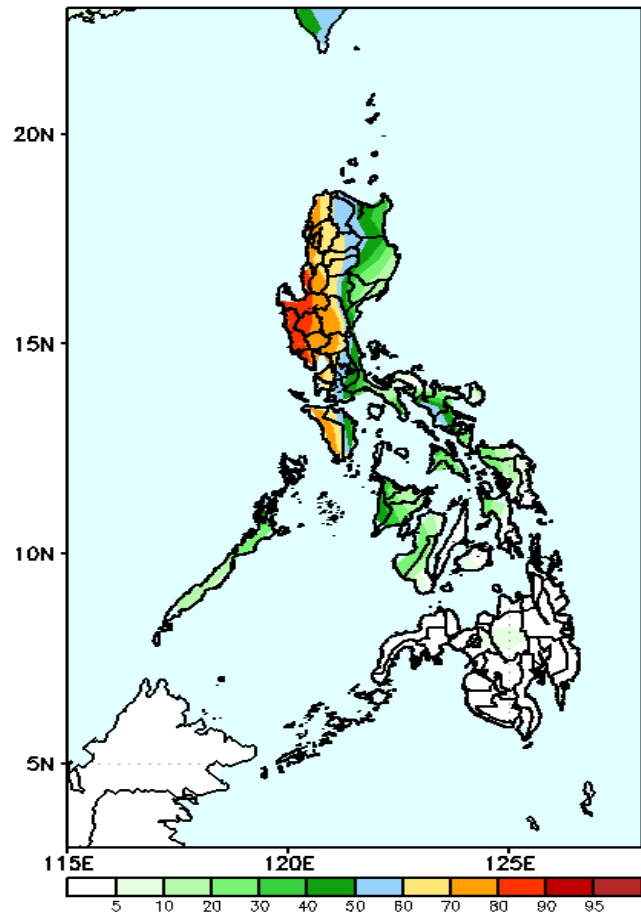
High probability of rainfall to exceed 50mm in most parts of Luzon and Antique while less likely for the rest of the country during the forecast period



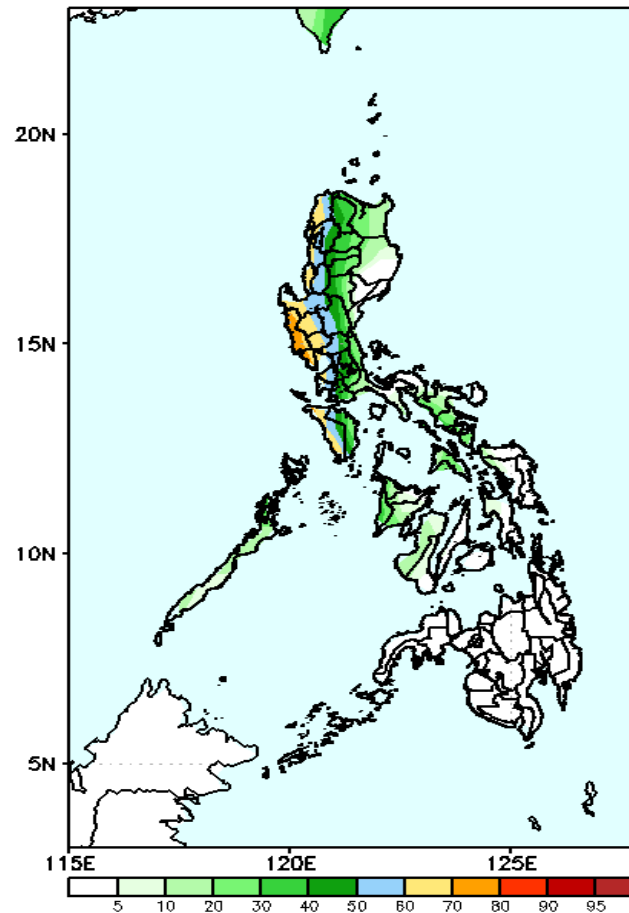
Exceedance Probability > 100/150/200 mm

Week 2: May 27- Jun 02, 2022

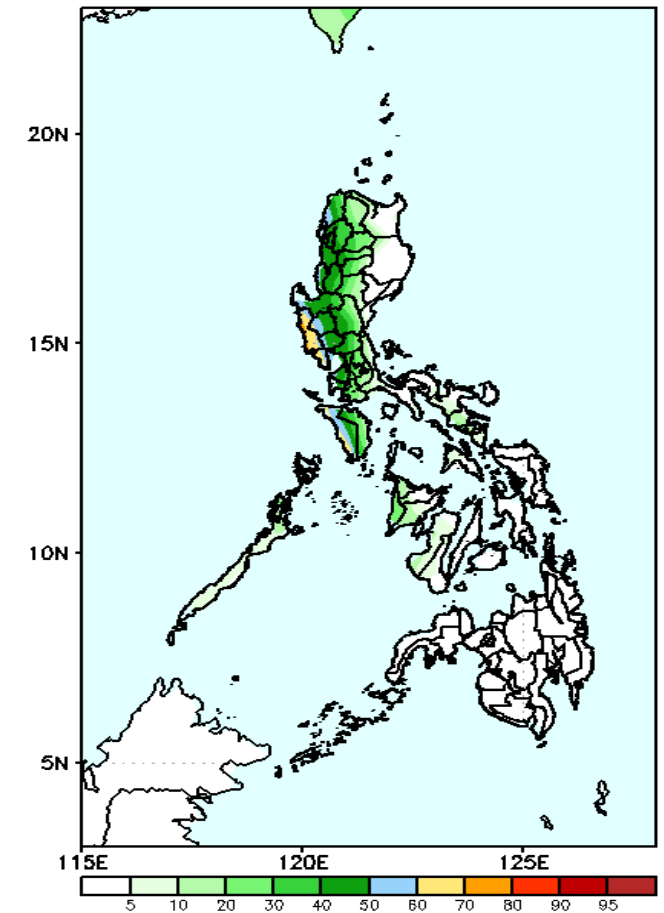
GEFS Week-2 Exceedance Prob. > 100mm
Valid: 20220527 - 20220602



GEFS Week-2 Exceedance Prob. > 150mm
Valid: 20220527 - 20220602



GEFS Week-2 Exceedance Prob. > 200mm
Valid: 20220527 - 20220602



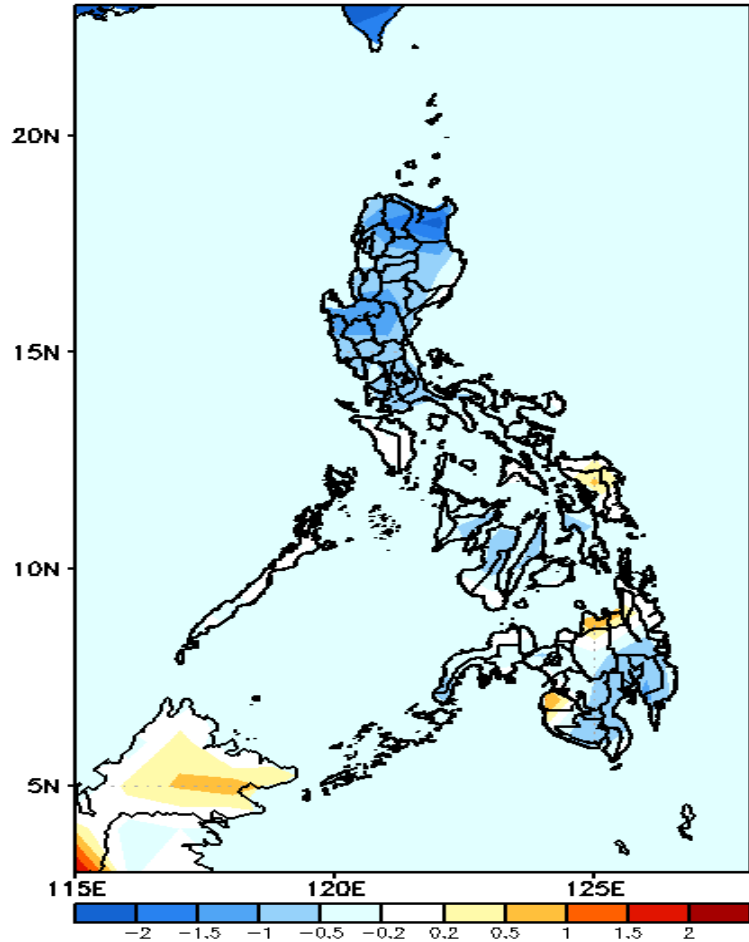
High probability of rainfall to exceed 100mm in most areas of western Luzon while less likely for the rest of the country during the forecast period.

Low probability of rainfall to exceed 150mm in most parts of the country except in western Luzon where there is 60-85% chance during the forecast period.

Low probability of rainfall to exceed 200mm in most parts of the country except in Zambales where there is 60-75% chance during the forecast period.

GEFS Week-1 & 2 Forecasts: T2m Anomaly

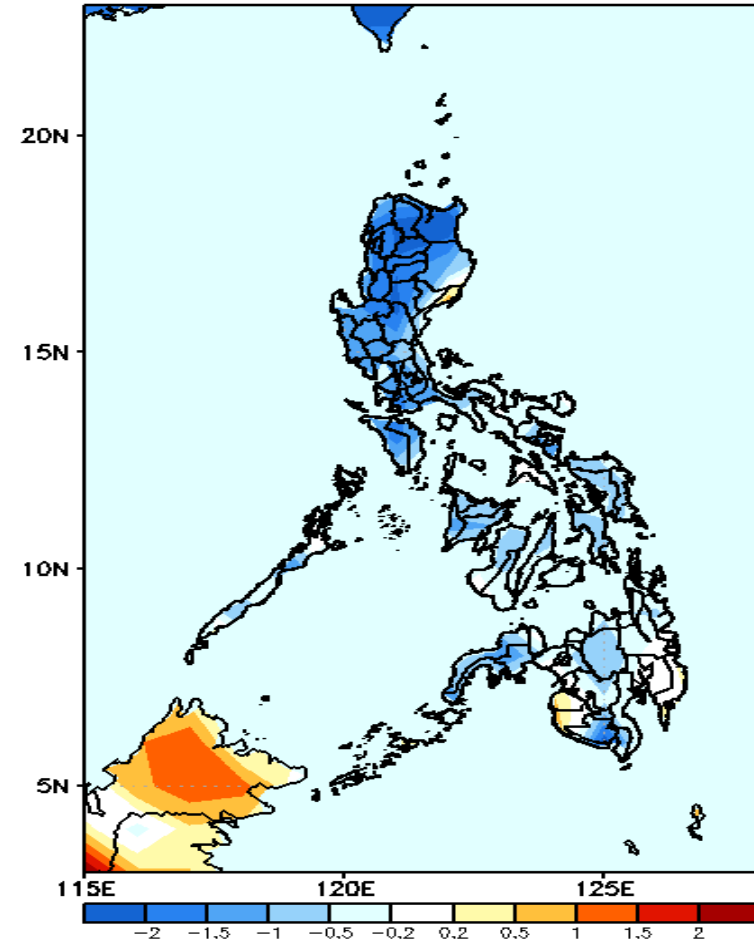
GEFS Week-1 T2m Anomaly
Valid: 20220520 - 20220526



2m Temperature Week 1: May 20-26, 2022

Slightly cooler to cooler than average surface air temperatures will likely experience in most parts of the country except in Eastern Visayas, Misamis Oriental and Maguindanao where slightly warmer temperature is expected during the forecast period.

GEFS Week-2 T2m Anomaly
Valid: 20220527 - 20220602



2m Temperature Week 2: May 27- Jun 02, 2022

Cooler than average surface air temperature will likely experience in most parts of Luzon and South Cotabato while average to slightly cooler temperature in Visayas and Mindanao during the forecast period.